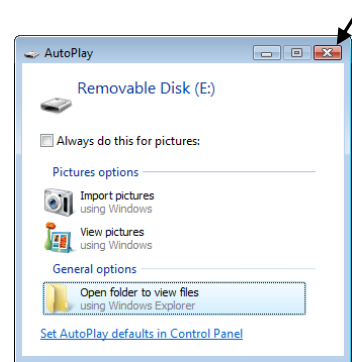


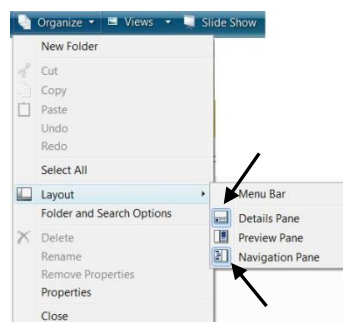
If later you wish to disconnect your USB removable disk, click the same button above again to disconnect. The button will turn blue.

When you connect your drive, you may see an **Autoplay** dialog box similar to the one below. Click the **Close** button to remove this box.



_____ **Page 19 Step 2:** Be sure to left click on “Computer” located on the right side of menu.

_____ **Page 19 Step 3:** See Figure 1.14 on page 20 to see the various labeled parts of the screen. Shown below are the two icons that will turn blue when you select them. You may need to select them by accessing the Layout menu twice.



_____ **Page 20, step 5:** Be sure to right click on the USB drive icon in the Folder list. Do not